

Angular Contact Ball Bearings

Bearing No. : **NACHI 7234C**

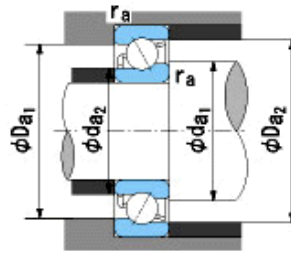
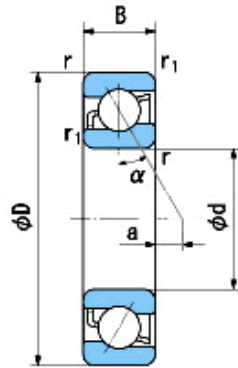
■ Bearing Type

■ Clearance

■ Tolerance Class

Dimensions

d = 170⁰_{-0.025}
 D = 310⁰_{-0.035}
 B = 52⁰_{-0.250}
 r = 4~6.5
 (Radial Direction)
 r = 4~9
 (Axial Direction)
 r1 = 1.5~3
 (Radial Direction)
 r1 = 1.5~5
 (Axial Direction)
 a = 2.2



Dimensions

da1(min) = 188
 da2(min) = 179
 Da1(max) = 292
 Da2(max) = 301
 ra(max) = 3
 ra1(max) = 1.5
 Mass = 17.4 kg

Basic Dynamic Load Rating Cr : **299,000** N

Basic Static Load Rating Cor : **360,000** N

Limiting Speed ;

Grease Lubrication : **3,300** min⁻¹

Oil Lubrication : **4,600** min⁻¹

O.D.Surface Runout with Side :

Axial Runout with Bore :

Axial Runout with Raceway :

Width Variation :

Radial Runout :

INNER RING

OUTER RING

-

-

-

0.030

0.030

-
-
-
0.030
0.060